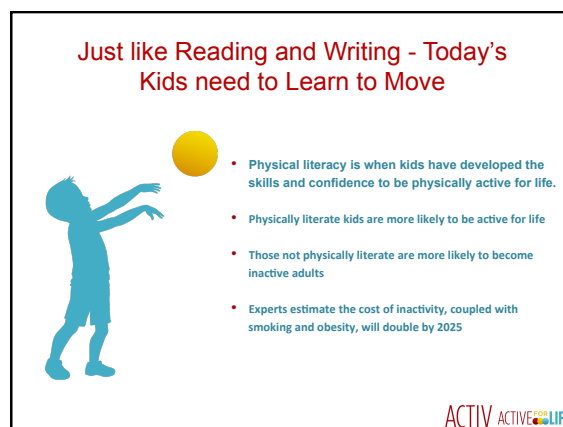
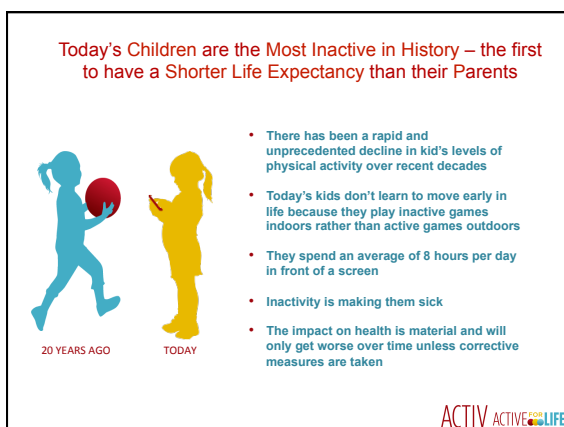
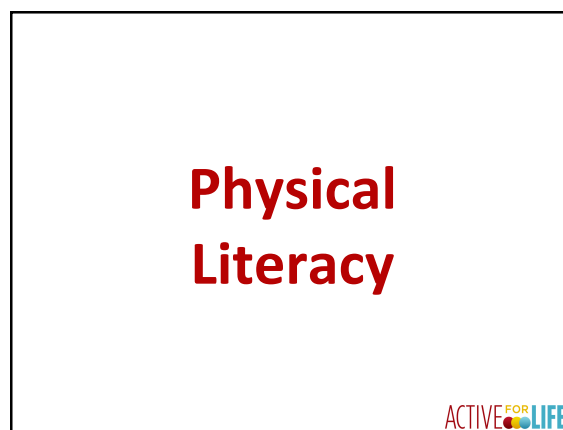
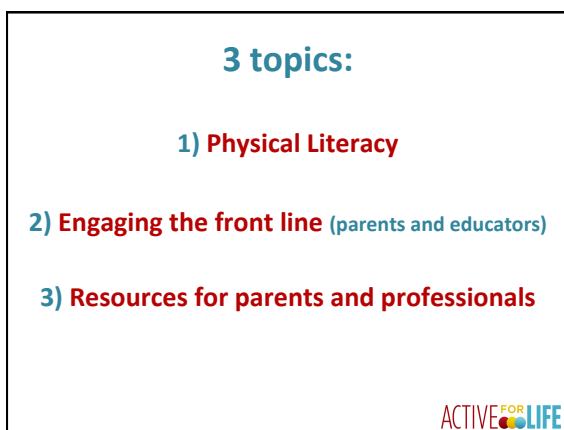
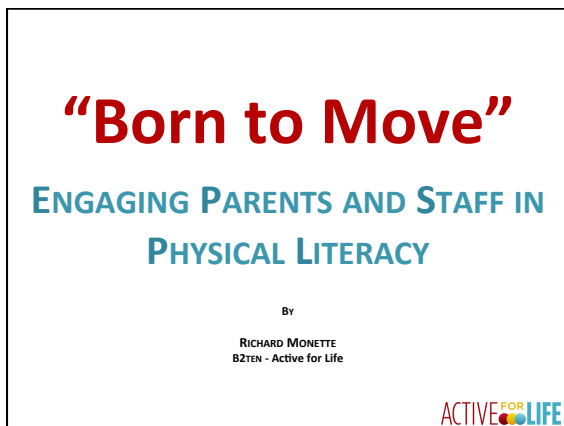
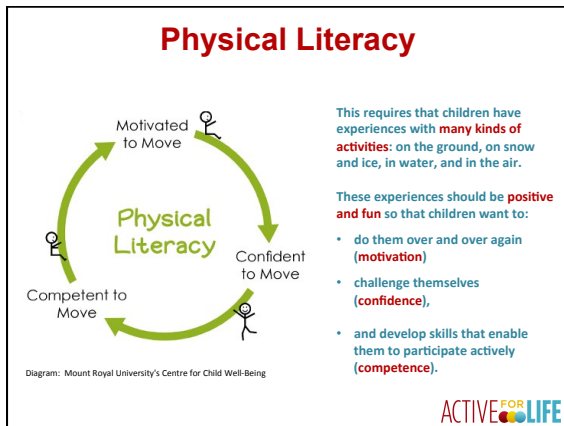


"Born to Move"
ENGAGING PARENTS AND STAFF
By
RICHARD MONETTE
LEAD - Active for Life

2016-05-18

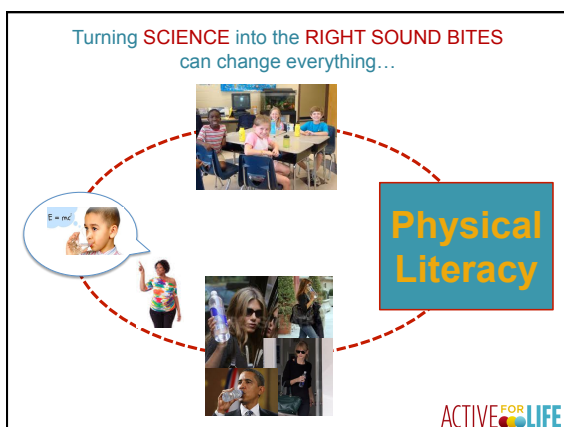
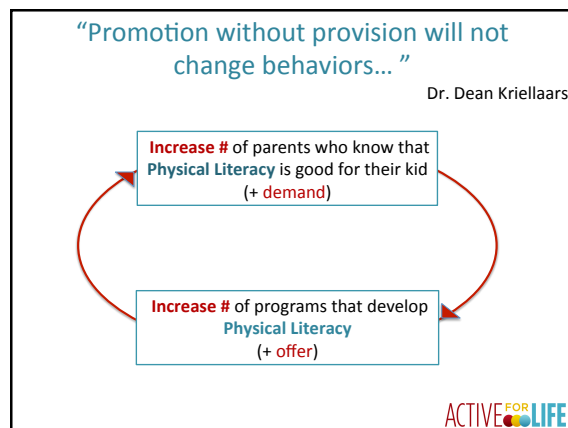
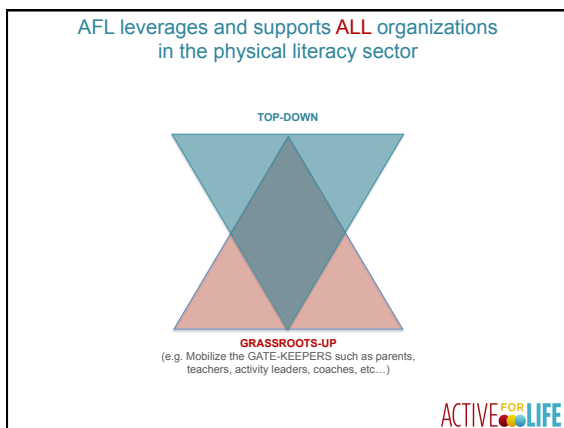




Engaging the front line (parents and educators)

Why and How

ACTIVE FOR LIFE

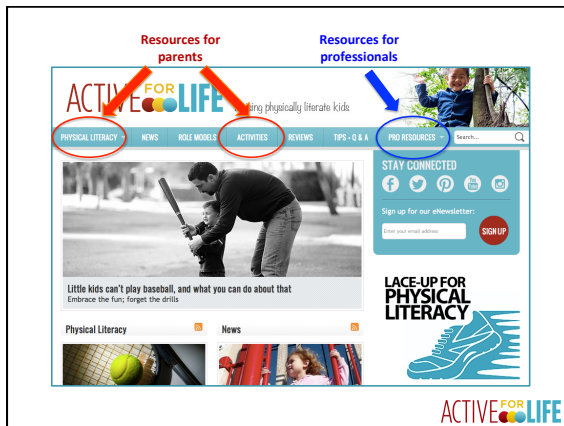


Resources for Parents and professionals

ACTIVE FOR LIFE

"Born to Move"
ENGAGING PARENTS AND STAFF
By
RICHARD MONETTE
LEAD - Active for Life

2016-05-18



*It is not the strongest of the species
that survive, nor the most
intelligent, but the one most
responsive to change.*

Darwin

ACTIVE FOR LIFE

